

5

Product Design



N O B L E P I N

STUDY AND RESEARCH:

EXISTING CLIPS AND PROBLEMS



The Spring Tend to fail over time due to rusting



The Plastic loses its integrity and breaks into pieces which basically leads to be an Environmental Hazard



Due to Harsh outdoor conditions the material turn brittle and serves weak until it breaks

Noble pin:

Introducing Noble Pin. A Seamless design has less hassle in manufacturing, made of Stainless Steel 304. And very convenient and hygiene to use.

Design Problem:

Existing Drying Clips tend to fail over time, due to harsh conditions and extensive usage. Plastic pegs are always an Environmental Hazard.

History:

The one-piece wooden clothes-peg for hanging up coats that was invented by the Shaker community in the 1700s.(Wikipedia)

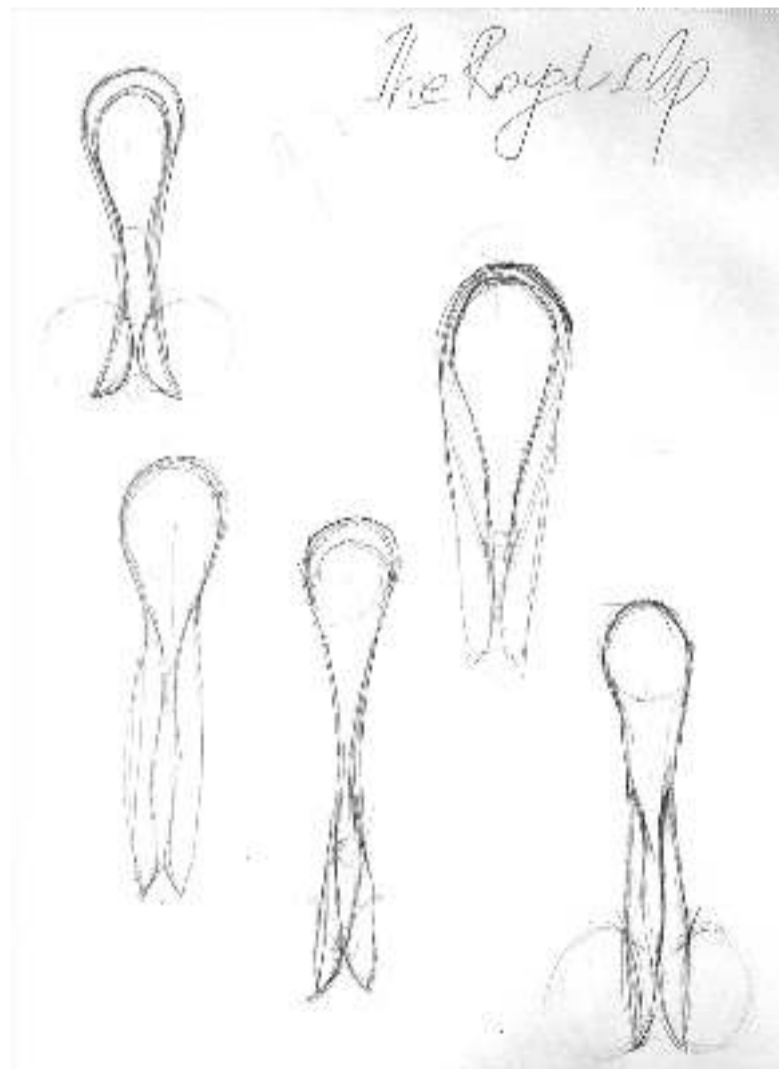
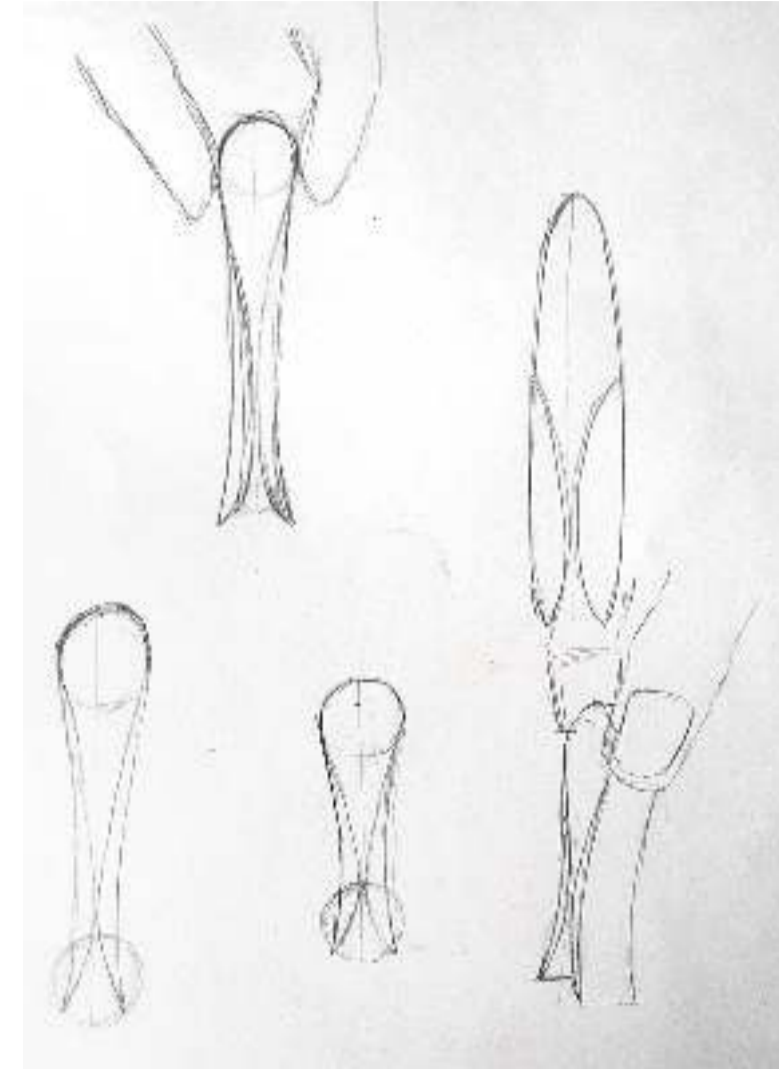


Design Intent:

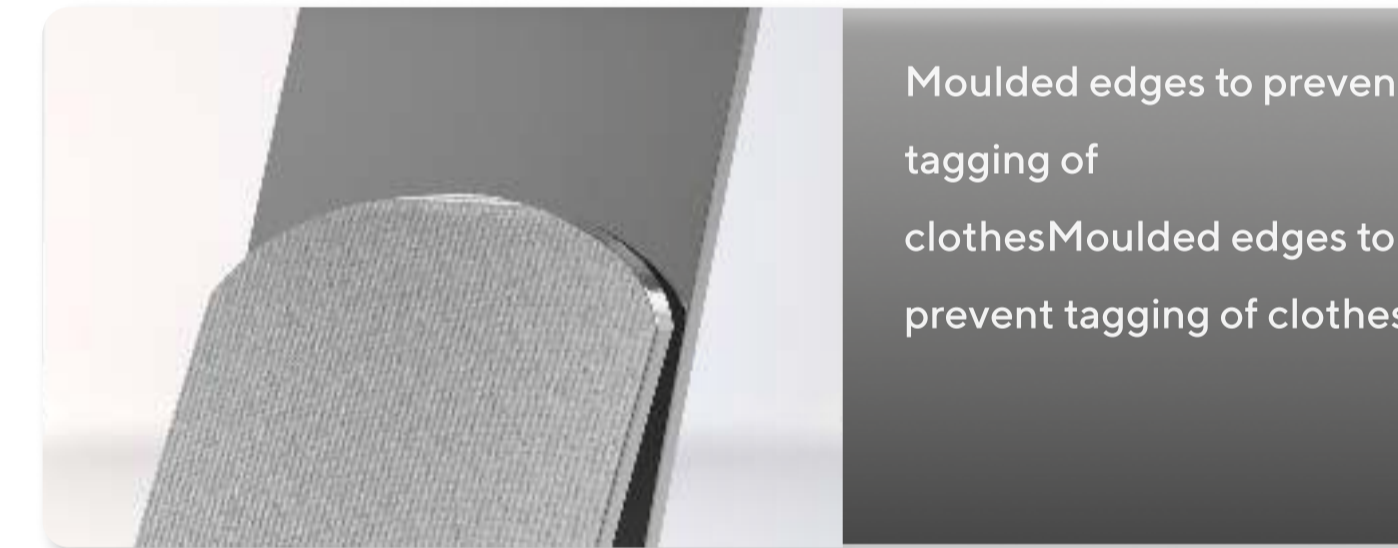
A clip which would not get aged over time and will not threaten the environment, easy to manufacture and use.

DESIGN PROCESS:

FORM DERIVATION



NOBLE PIN DESIGN:



SPECIFICATION:

- The design was inspired by the early Japanese single-piece wooden pegs, which were used for hanging robes usually.
- Why Stainless Steel? Stainless steel has high durability and very less rate of corrosion. Stainless Steel 304 is cheaper and easily available.





VALO

VALO:

/VAALow t/.

Valo's language of origin is Finnish. The name means 'man of the light'.

Valo is a compact multi-purpose lamp for indoor and outdoor requirements. It's a highly portable stylish device designed to assist while camping, as a deco for your nightstand. Since its solar-powered you never have to look for batteries.

Design Problem:

A multipurpose light which could be used anywhere and everywhere.

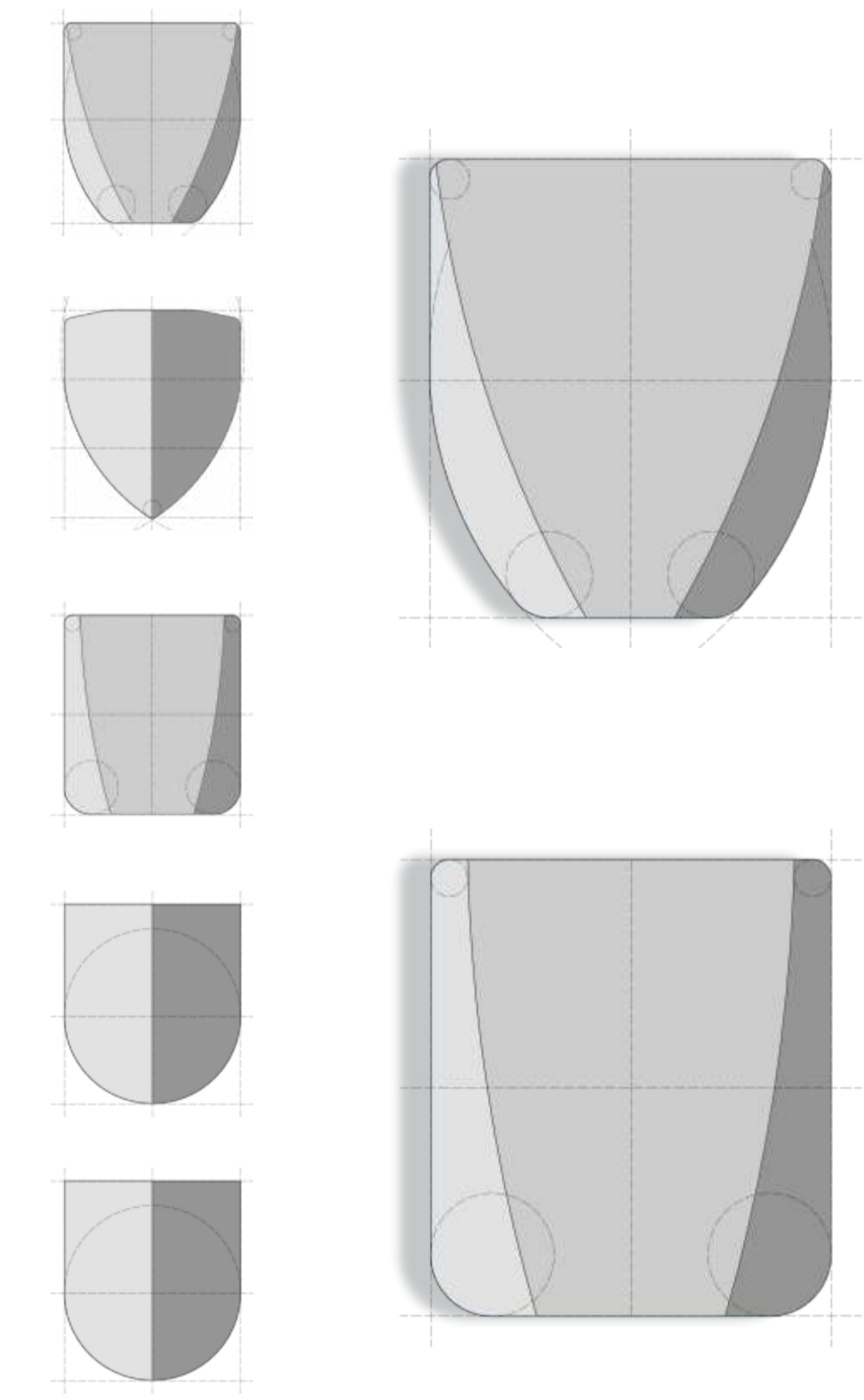
Purpose:

It should be easy to carry and a portable gadget which might help your Deco and a carry on device.

Design Intent:

It A lamp which would suit your interior as well as your late night adventure. Which would Make Valo stand out from other adventure lights.

SHAPE FORMATION



Strong.

Bold!

DB9.

SLEEK...

Wallet.

Boxy

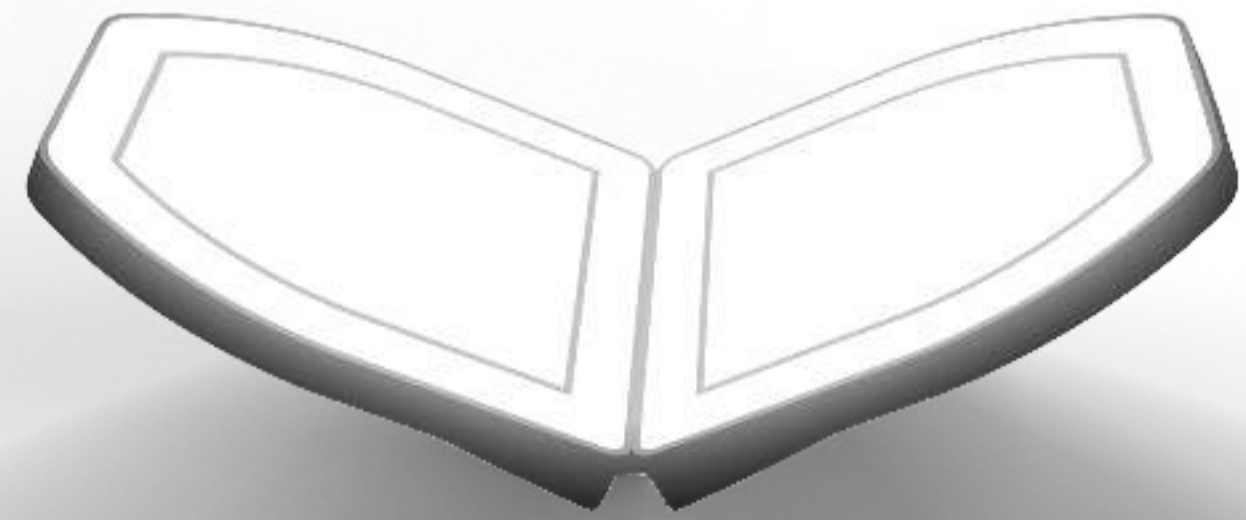
Convenient.

Make up Kit

CONCEPT



+

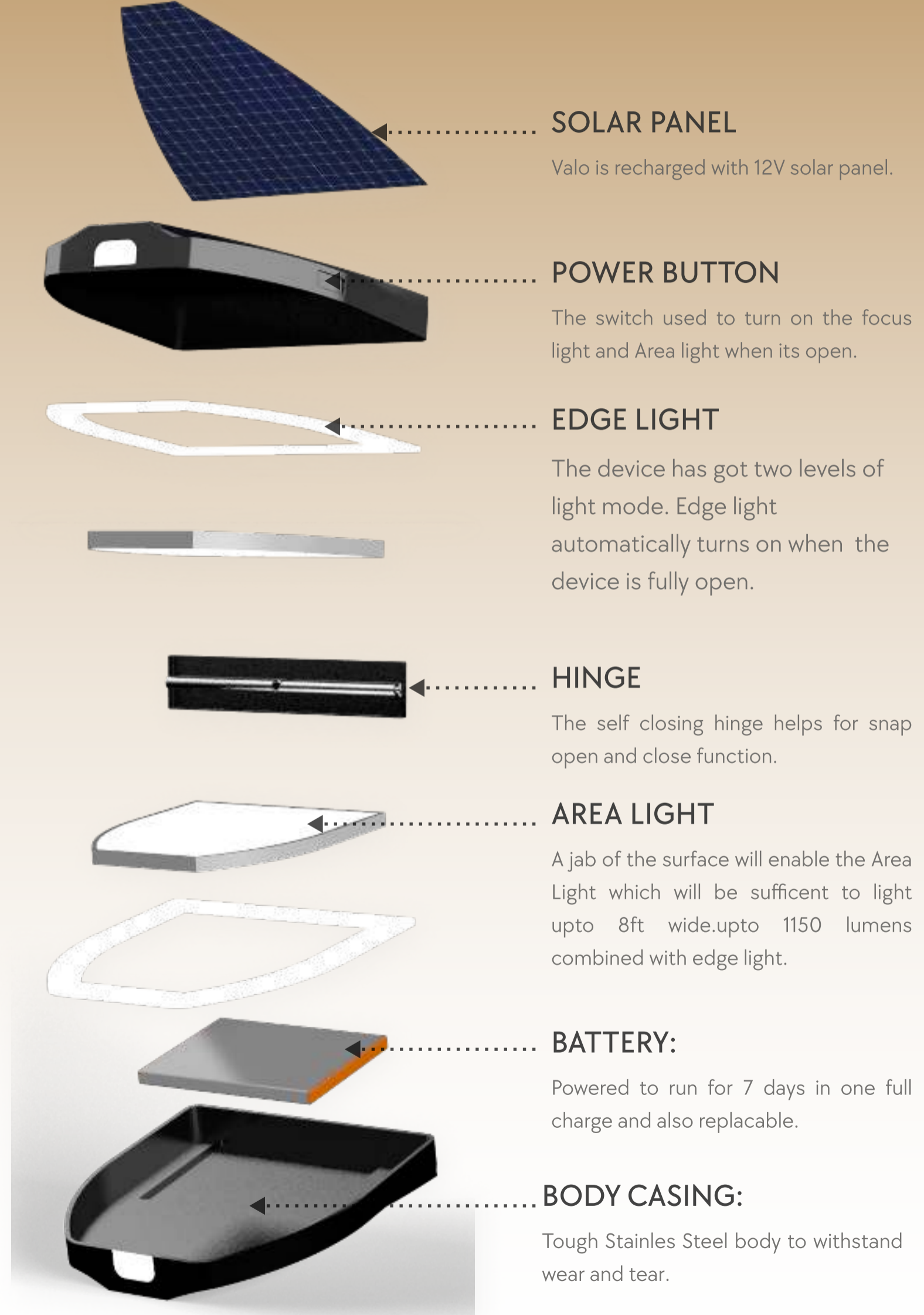


SPECIFICATION:

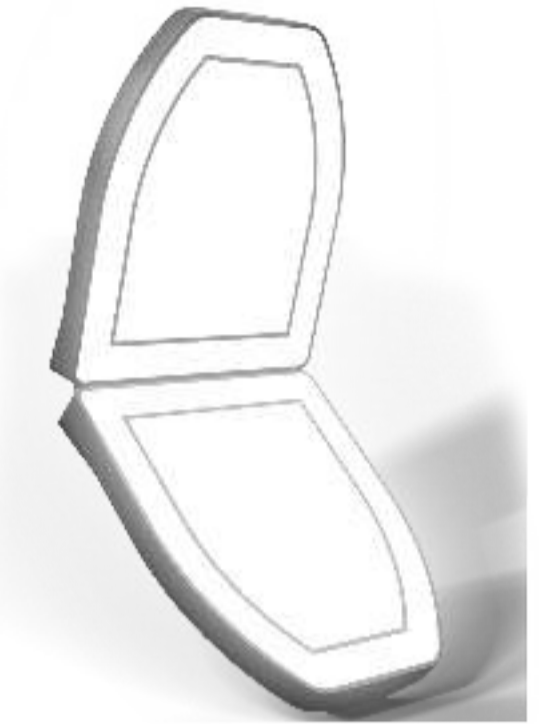
EDGE LIGHT - 9W LED | 400 lumens.

AREA LIGHT - 15W LED | 750 lumens

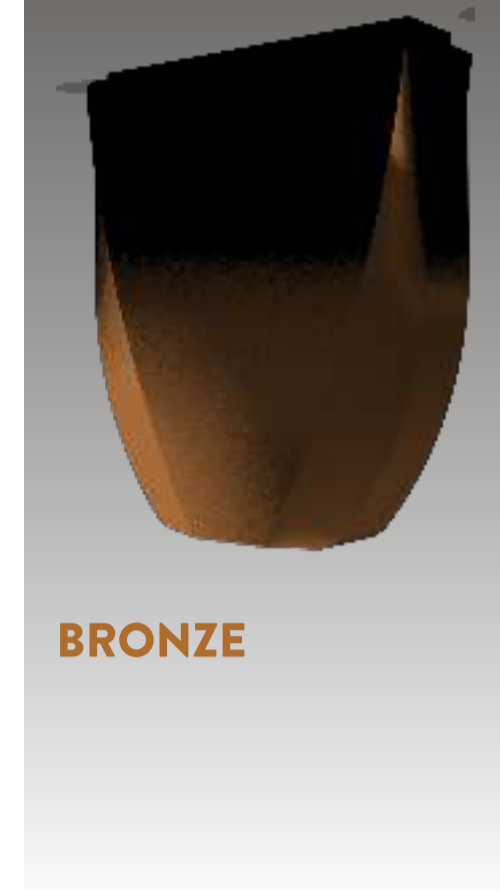
BATTERY - 18V output | 150+ hours usage once fully charged



EDGE LIGHT ON



AREA LIGHT ON



BRONZE



BLACK



CHROME



6

My Projects



Elevation Designs for a Commercial Building



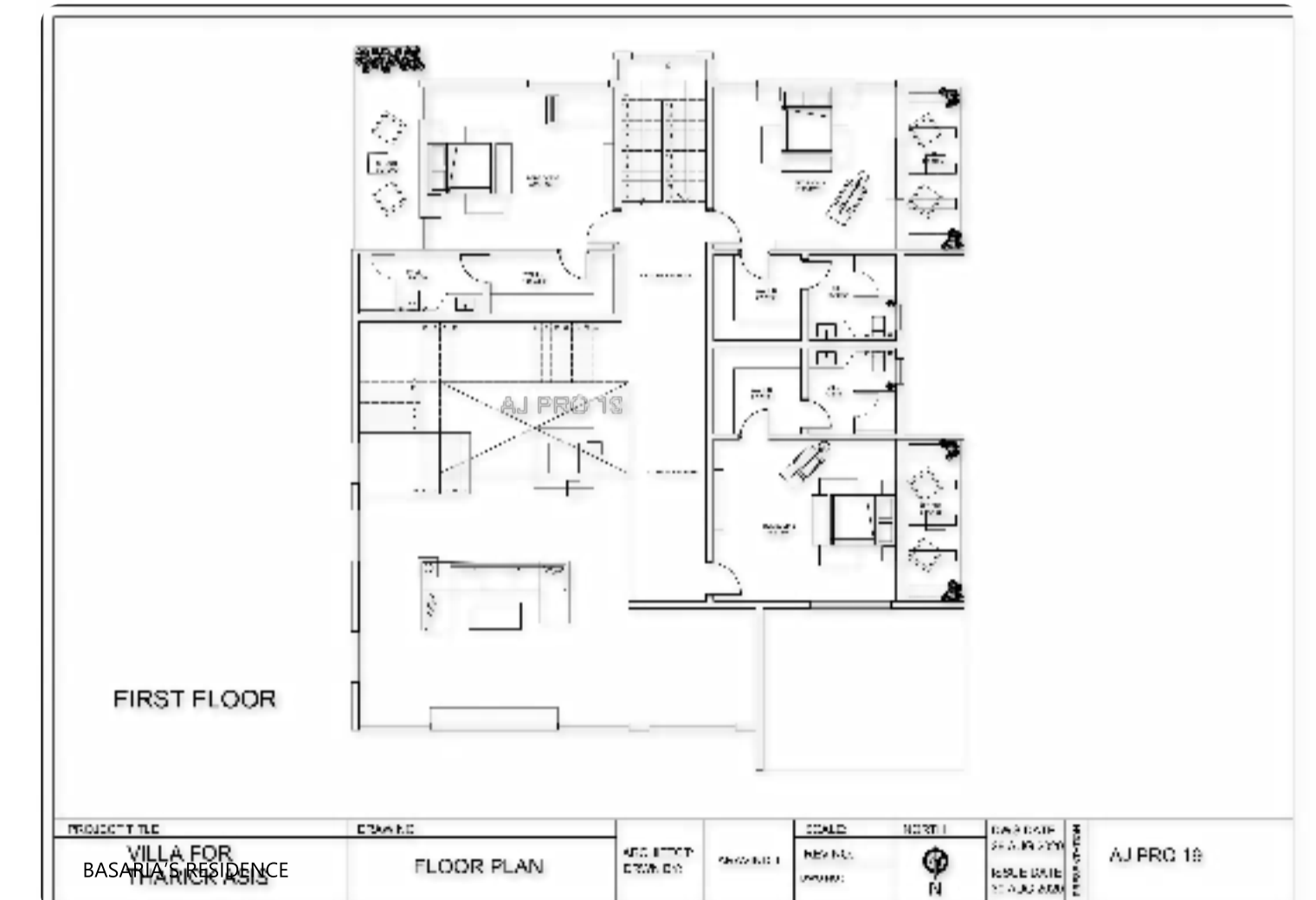
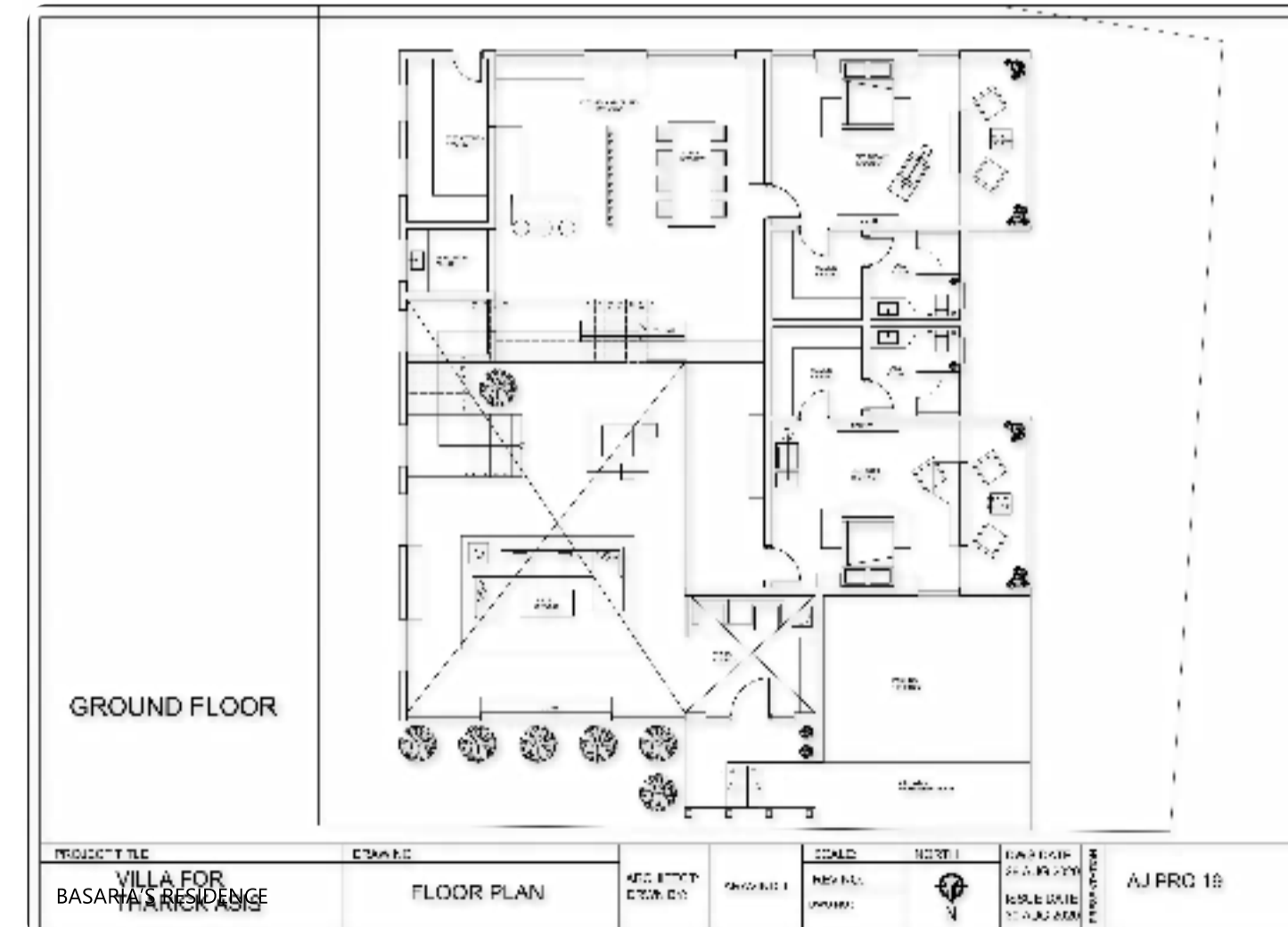
Residence projects



Design for a Mini-mall in Kinshasa



Floor Plans



WEBSITE LANDING PAGES

Designed and Developed



PACKAGE DESIGN

Label design and Mockup for Bakers Pvt. Ltd



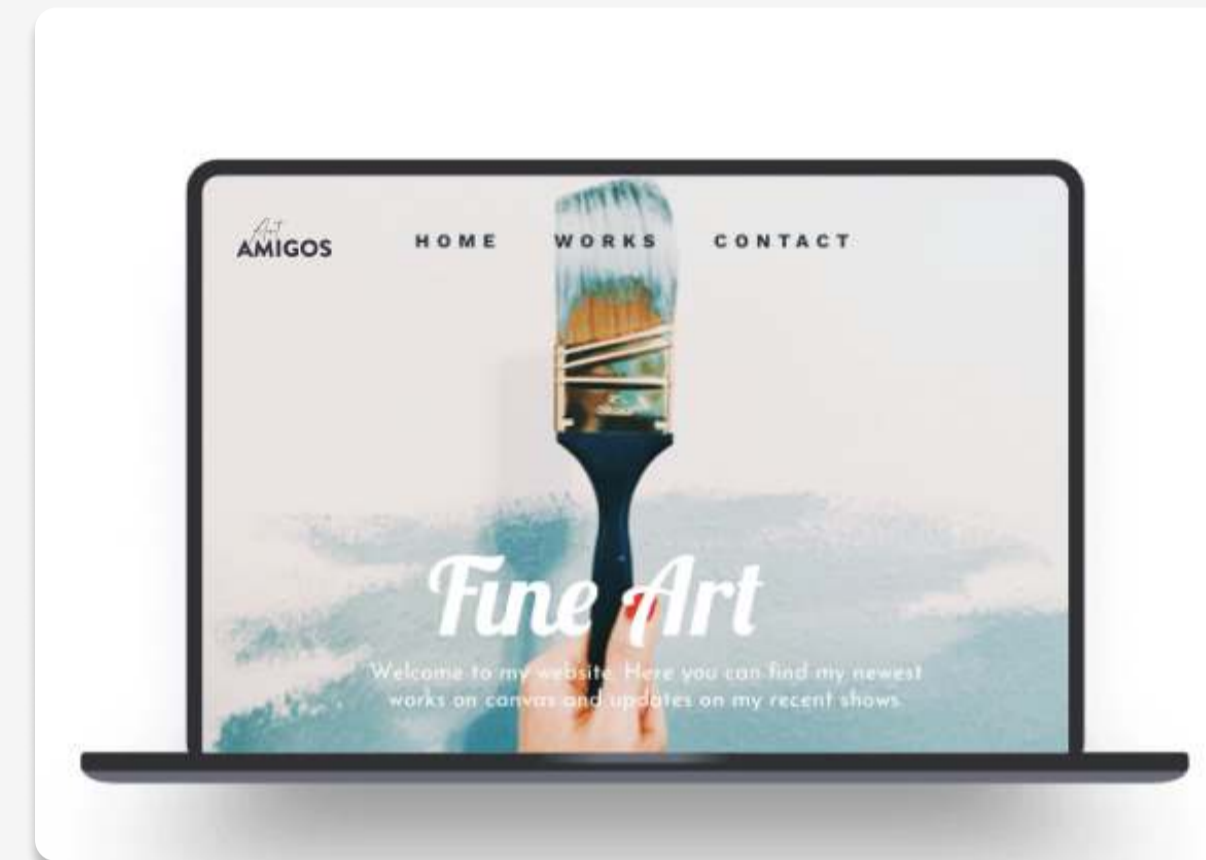
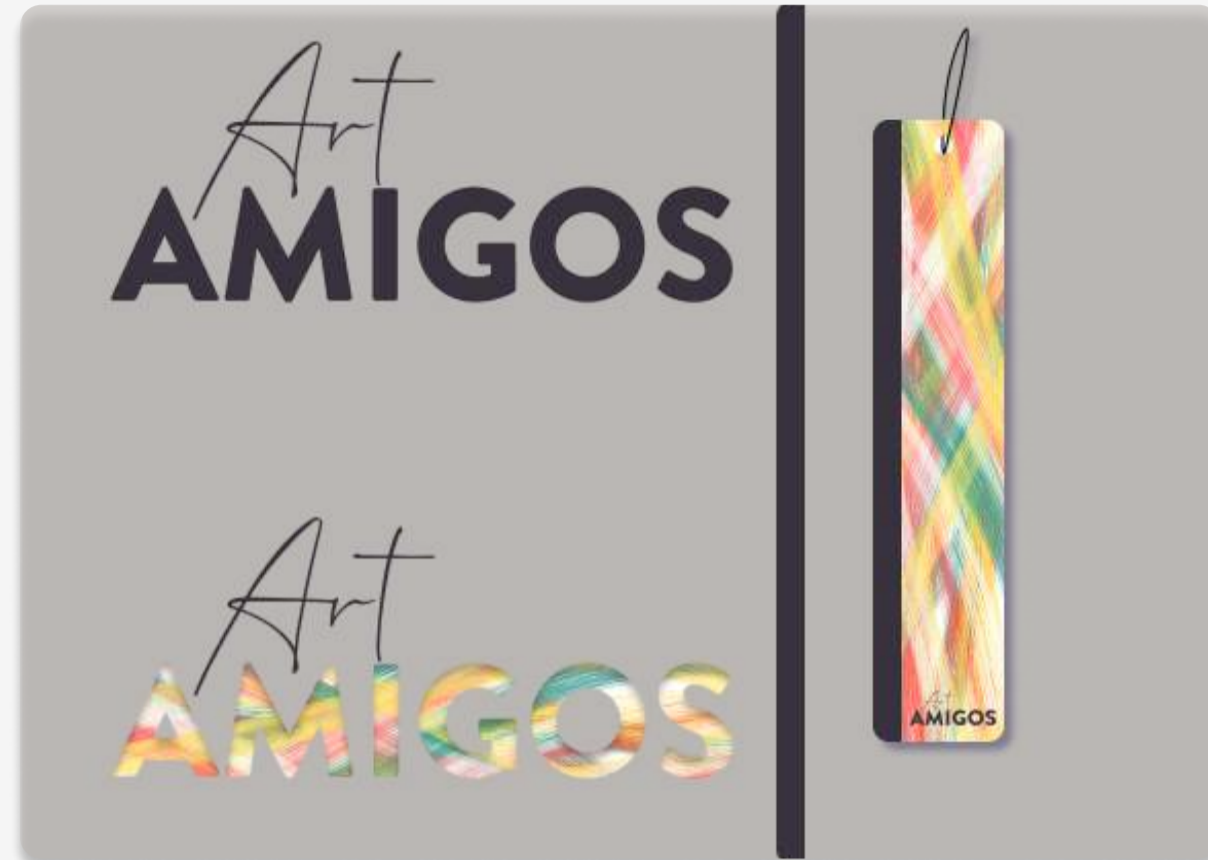
LOGO DESIGN AND BRANDING:

Typeface logo for Art amigos

OPTION 1

Type face Used

Allison Script
BRANDON GROTESQUE

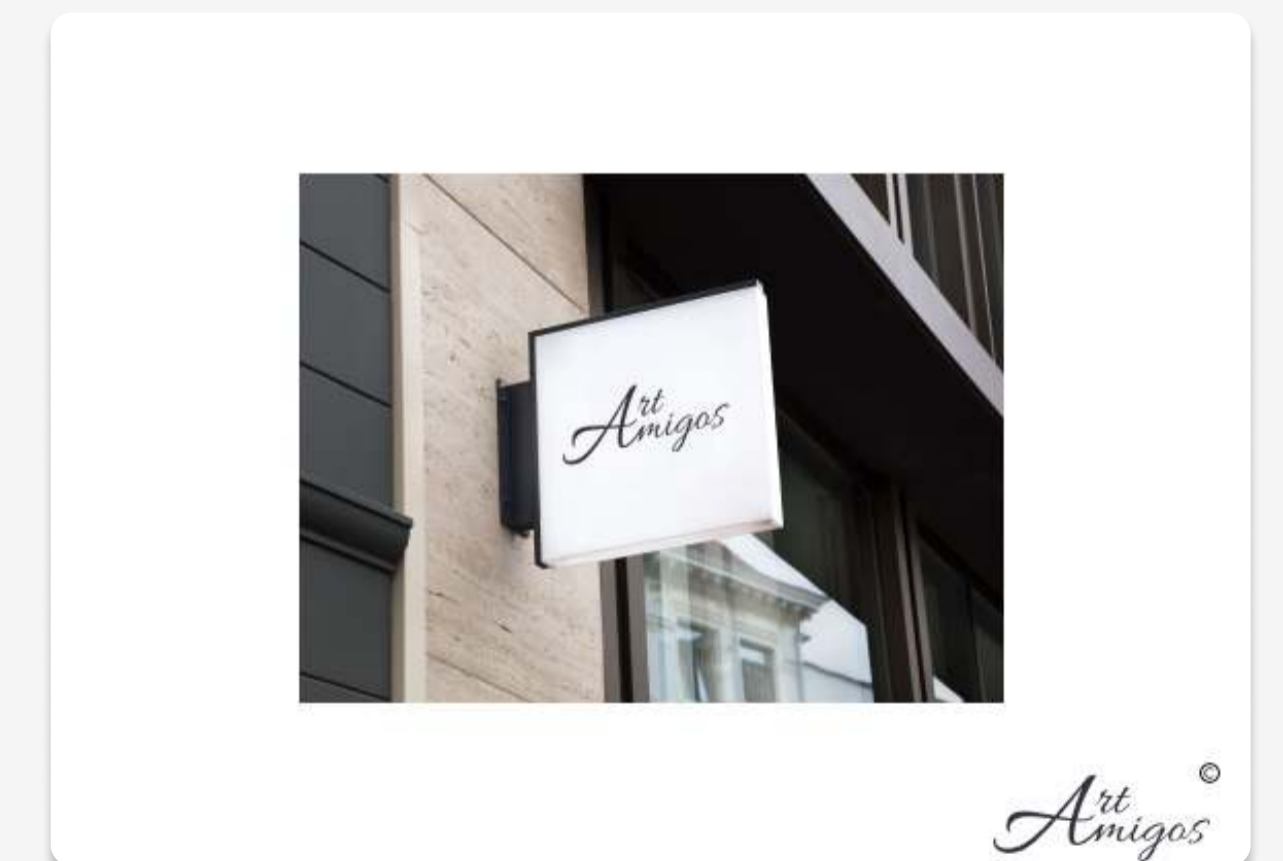
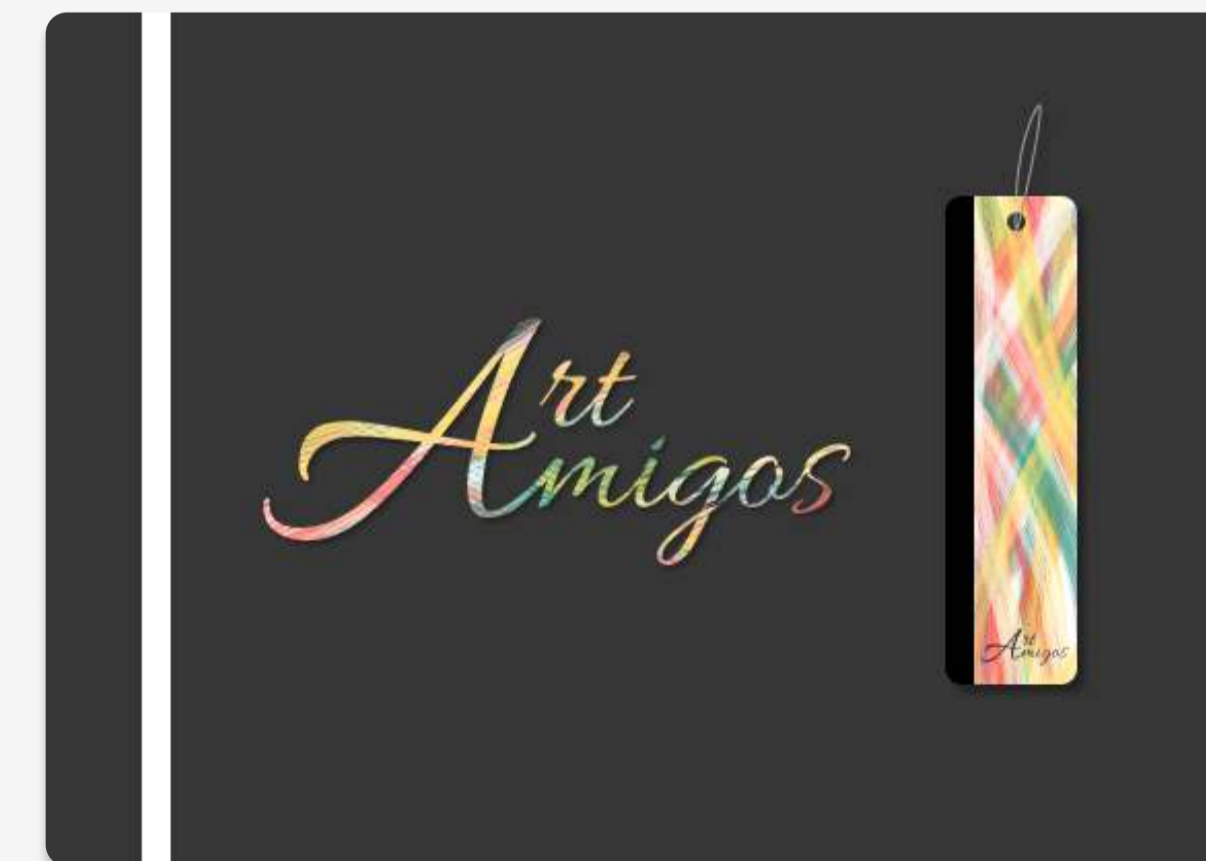


OPTION 2

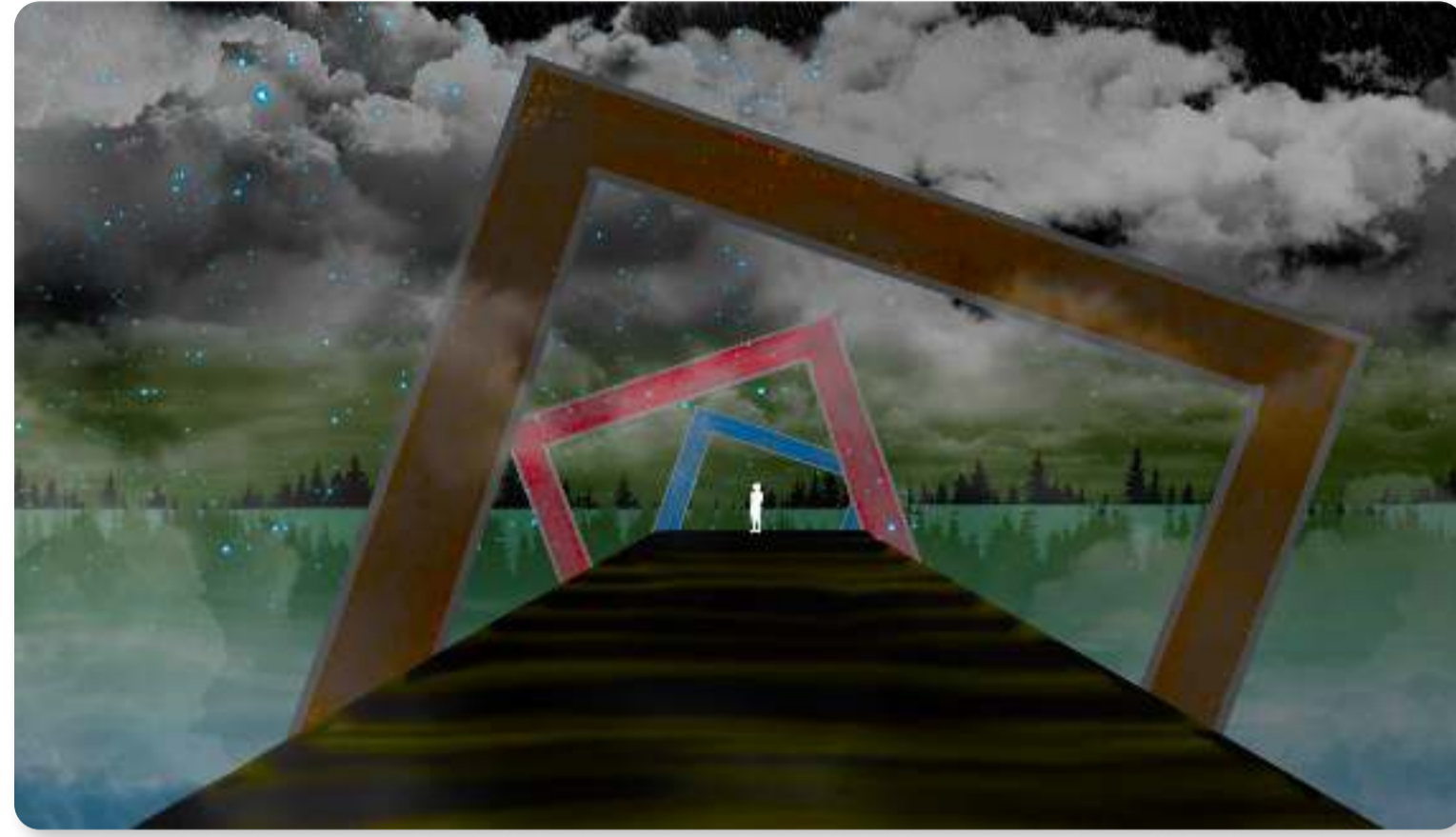


Type face Used

Allura



ILLUSTRATIONS



'Peace begins when expectation ends'



'Wanderlust I'



'I'm coming for everything they said I could'nt have'



'Reflections Never Lie'



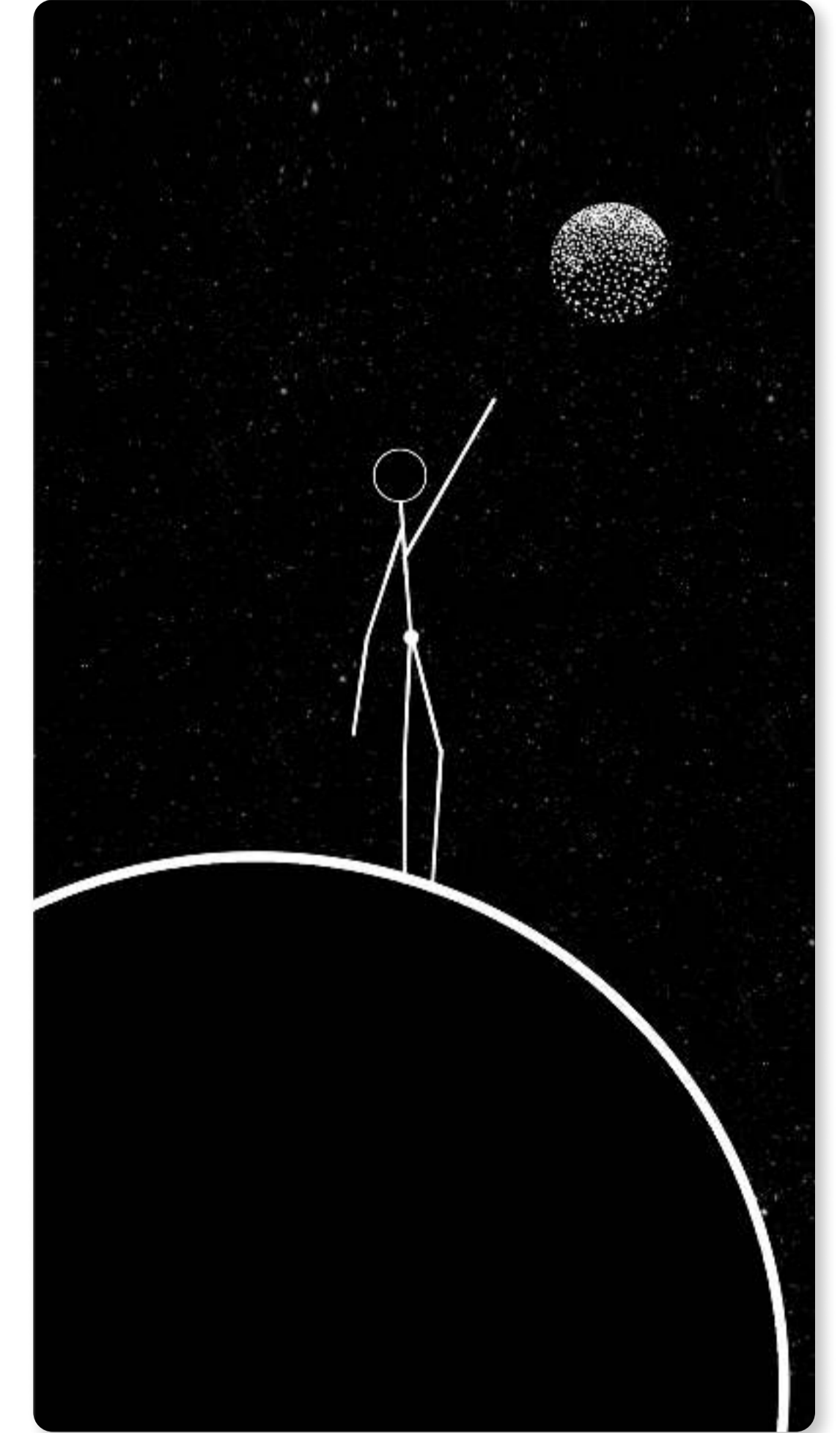
'Wanderlust II'



'Wanderlust III'



'The clumsy Artist's clumsy House'

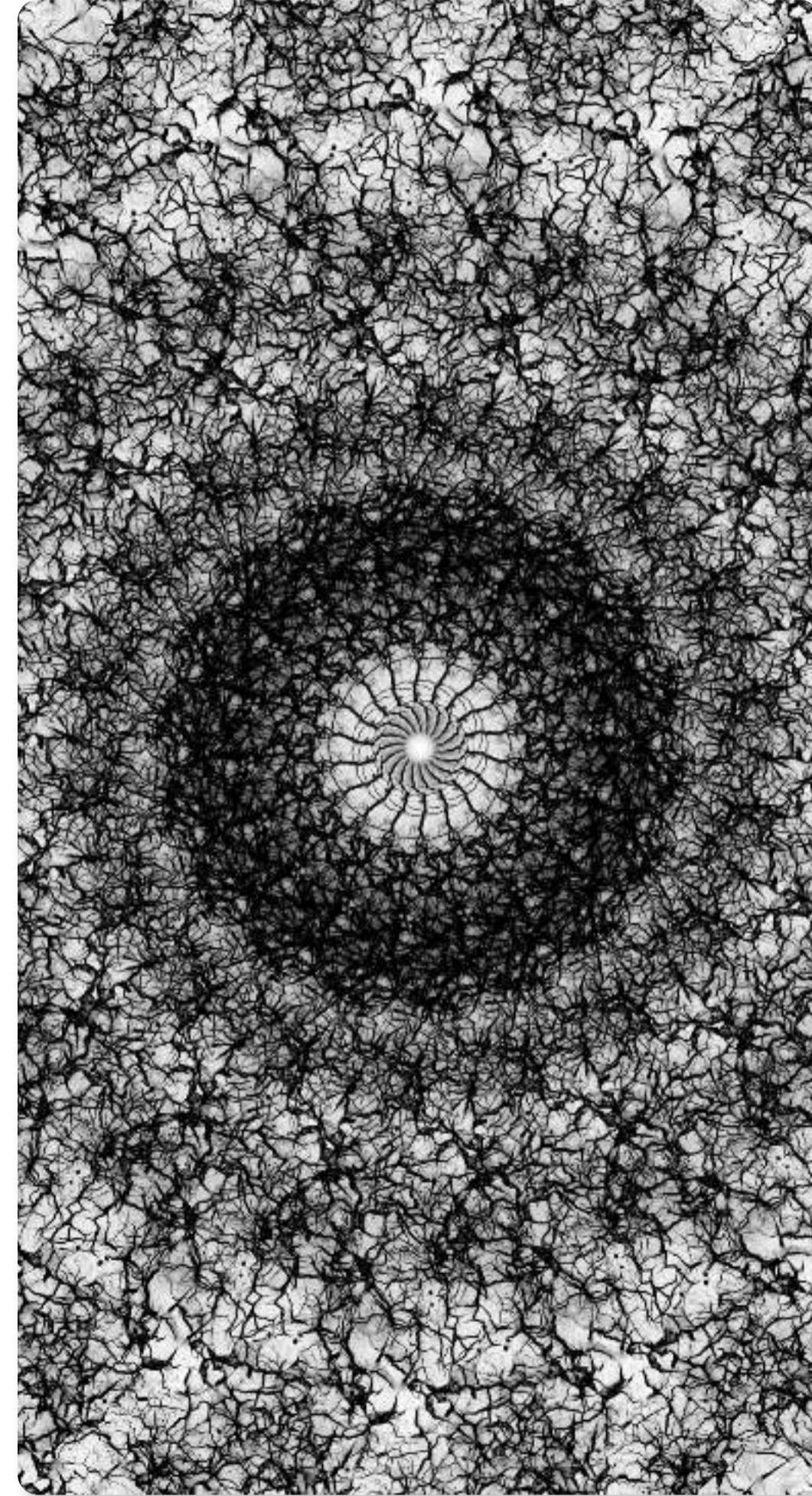


'Dreamer'

ILLUSTRATIONS



'Focus determines Reality'



'You live in a Dream, You manufacture Illusions'



A Logo for upcoming YouTube chanel for teaching spoken hindi through tamil